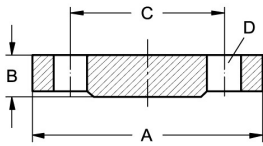


Welding neck flanges EN 1092-1

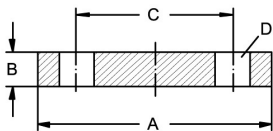
Art.No EUR Art.No EUR

Blind flange DIN 2527, form C, ND 16



DN	A	B	C	D		AISI316L-1.4435	AISI316Ti-1.4571
10	90	14	60	4xM12x55		467130-C Enquiry	464030-C Enquiry
15	95	14	65	4xM12x55		467131-C Enquiry	464031-C Enquiry
20	105	16	75	4xM12x55		467132-C Enquiry	464032-C Enquiry
25	115	16	85	4xM12x55		467133-C Enquiry	464033-C Enquiry
32	140	16	100	4xM16x65		467134-C Enquiry	464034-C Enquiry
40	150	16	110	4xM16x65		467135-C Enquiry	464035-C Enquiry
50	165	18	125	4xM16x65		467136-C Enquiry	464036-C Enquiry
65	185	18	145	4xM16x65		467137-C Enquiry	464037-C Enquiry
80	200	20	160	8xM16x75		467138-C Enquiry	464038-C Enquiry
100	220	20	180	8xM16x75		467139-C Enquiry	464039-C Enquiry
125	250	22	210	8xM16x75		467141-C Enquiry	464041-C Enquiry
150	285	22	240	8xM20x80		467142-C Enquiry	464042-C Enquiry
200	340	24	295	12xM20x80		467144-C Enquiry	464044-C Enquiry
250	405	26	355	12xM24x90		467146-C Enquiry	464046-C Enquiry
300	460	28	410	12xM24x90		467148-C Enquiry	464048-C Enquiry

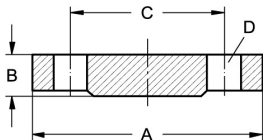
Blind flange DIN 2527, form B, ND 25



DN	A	B	C	D		AISI316L-1.4435	AISI316Ti-1.4571
200	360	30	310	12xM24x90		467244-B Enquiry	464244-B Enquiry
250	425	32	370	12xM27x110		467246-B Enquiry	464246-B Enquiry
300	485	34	430	16xM27x110		467248-B Enquiry	464248-B Enquiry
350	555	38	490	16xM30x120		467201-B Enquiry	464201-B Enquiry
400	620	40	550	16xM33x130		467202-B Enquiry	464202-B Enquiry
500	730	45	660	20xM33x130		467203-B Enquiry	464203-B Enquiry

10 - 150 Use flanges ND 40.

Blind flange DIN 2527, form C, ND 25



DN	A	B	C	D		AISI316L-1.4435	AISI316Ti-1.4571
200	360	30	310	12xM24x90		467244-C Enquiry	464244-C Enquiry
250	425	32	370	12xM27x110		467246-C Enquiry	464246-C Enquiry
300	485	34	430	16xM27x110		467248-C Enquiry	464248-C Enquiry
350	555	38	490	16xM30x120		467201-C Enquiry	464201-C Enquiry
400	620	40	550	16xM33x130		467202-C Enquiry	464202-C Enquiry
500	730	45	660	20xM33x130		467203-C Enquiry	464203-C Enquiry

10 - 150 Use flanges ND 40.